



## **NetWare Management Agent 2.1: Product Details**

NetWare Management Agent is a set of NetWare Loadable Modules (NLMs) that provides server statistics and alarm notification to the ManageWise® 2.1 management solution or to any third-party Simple Network Management Protocol (SNMP)-based management console. By loading one copy of NetWare Management Agent™ software on each NetWare 3™ or NetWare 4™ server, you can monitor, maintain, and optimize server performance in a distributed computing environment from a single location.

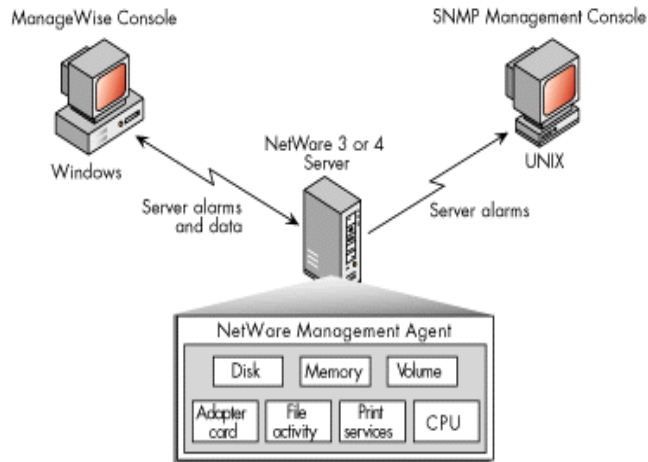
From ManageWise, you can view statistics in a graphical format regarding server configuration, CPU utilization, and memory allocation for any server running the NetWare Management Agent. For example, you can view network configuration, including the server's network interface adapter and configuration, protocols, and frame types used; hard disk information, including information about partitions, Hot Fix™ areas, logical volume sizes, loaded name spaces, and remaining available space; NLM™ information, including version numbers, manufacturers, and memory usage; and print services information, including the configuration and status of print servers and print queues. These statistics help you proactively manage your network.

Once you install NetWare Management Agent, authorized support personnel can manage the corresponding server from any SNMP console. NetWare Management Agent can also send SNMP server alarms to SNMP consoles, using either IPX™ or IP protocols.

### **Features**

- Provides a wide range of server configuration data
- Notifies you of potential or existing server problems through 320 different real-time alarms
- Enables you to customize alarm thresholds
- Provides configurable target designation for SNMP alarms
- Enables server management from the ManageWise console
- Provides unattended monitoring of NetWare® servers

**Figure 1: Novell's NetWare Management Agent enables you to manage NetWare 3 and NetWare 4 servers from multiple management consoles.**



## Hardware and Software Requirements

NetWare Management Agent runs on NetWare 3 or NetWare 4 servers and must be installed on each server.

### Server

- 2MB of RAM on each NetWare 3 and NetWare 4 server
- 2MB of free disk space on the SYS: volume

## Ordering Information

You can order NetWare Management Agent from any Novell Authorized, Gold, or Platinum Partner. For more information, contact your local Novell® office or call the Novell Customer Response Center at 1-801-228-4CRC (1-801-228-4272). Or, in the United States and Canada, call toll free 1-888-321-4CRC (1-888-321-4272). You may also visit Novell's World Wide Web site at <http://www.novell.com> or use Novell's Product Information FaxBack system at 1-801-861-3030. Or, in the United States and Canada, call 1-800-209-3500.

© 1997 Novell, Inc.